

●● kami S

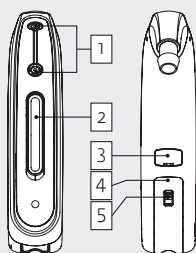


- 10k HD Sound
- Adaptive Sound Zoom
- Sound Zoom
- Adaptive Noise Guard
- Expansion (Squelch)
- Wind Shield
- Adaptive Feedback Guard
- Feedback Check
- 12 WDRC-Channels
- Multi Channel MPO
- Up to 4 Programs
- Rocker Switch (programmable)
- Low Battery Indicator
- Start-up Delay
- Battery Compartment Lock
- Direct Audio Input
- Auto T-Coil/Auto Phone
- T-Coil
- Tinnitus-Module
- Data Logging
- Live View
- MySound!
- Water repellent coating
- Option: Easy Thin Tube System

**Technical Data**

	EN 60118-7:2005 (2 cm <sup>3</sup> -coupler)	EN 60118-0/A1:1994 (Ear Simulator)	ANSI S3.22-2009 (2 cm <sup>3</sup> -coupler)
<b>Operating Voltage</b>	1.30 V	1.30 V	1.30 V
<b>Acoustic Gain (50 dB SPL)</b>			
HFA	59 dB	-	59 dB
1600 Hz	-	71 dB	-
Peak Value	66 dB	72 dB	66 dB
<b>Max. Output (90 dB SPL)</b>			
HFA	124 dB SPL	-	124 dB SPL
1600 Hz	-	137 dB SPL	-
Peak Value	132 dB SPL	137 dB SPL	132 dB SPL
<b>Reference Test Gain</b>	48 dB	61 dB	48 dB
<b>Induction Coil Sensitivity</b>	83 dB SPL	99 dB SPL	109 dB SPL
<b>Frequency Range</b>	100 Hz-8000 Hz	100 Hz-6100 Hz	100 Hz-8000 Hz
<b>Total Harmonic Distortions</b>			
500/800/1600 Hz	5/3/2 %	6/3/3 %	5/3/2 %
<b>Equivalent Input Noise</b>	23 dB	18 dB	23 dB
<b>Battery Current</b>	1.45 mA	1.25 mA	1.45 mA
<b>Battery Type</b>	312	312	312
<b>Average Battery Life (Zinc-Air)</b>	100 h	100 h	100 h
<b>Tinnitusmasker<sup>®</sup></b>			
Noise Level (RMS)	112	120	112
Frequency Range	600 Hz-6400 Hz	800 Hz-8000 Hz	600 Hz-6400 Hz

\* Only when Tinnitus-Module is activated in audifit.



- 1 Dual Microphone system
- 2 Rocker switch
- 3 Cover flap for audio contacts
- 4 Battery compartment/On-Off-switch
- 5 Battery compartment lock

**Standard**



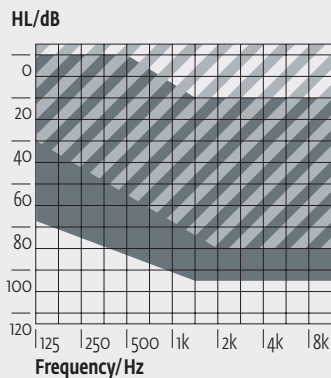
**Programming**

Cable: Cable set H or I  
 Battery: without Battery  
 Progr.-Box: HI-PRO/HI-PRO II  
 HI-PRO USB  
 NOAHlink  
 Software: audifit 5.5



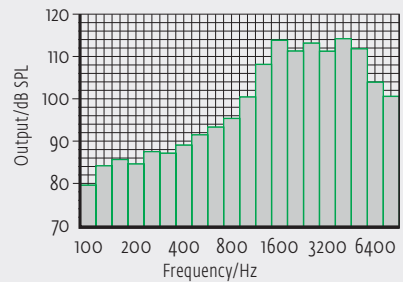
●● kami S

Fitting Range



The shaded area applies to the kami S with Easy Thin Tube Option.

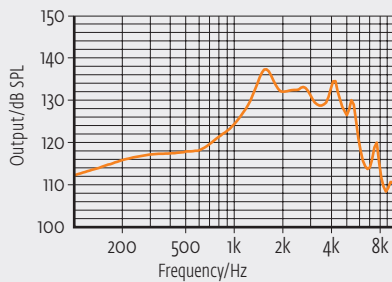
Third Octave Band Noise\*



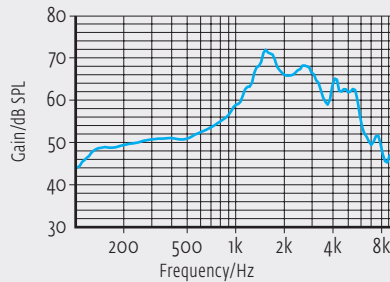
\* All curves are measured with 2cm<sup>3</sup>-coupler (EN 60318-4:2010). Only when Tinnitus-Module is activated in audifit.

These curves are measured with Ear Simulator (EN 60318-4:2010) in reference setting.

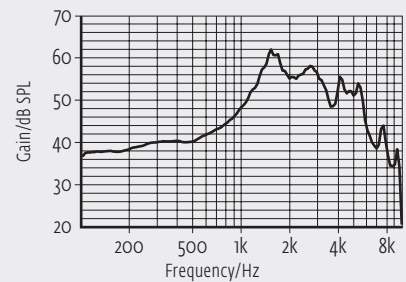
Maximum Output



Acoustic Gain

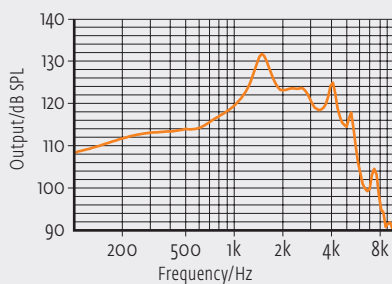


Frequency Response (RTG)

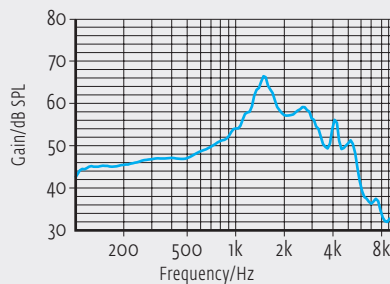


All curves are measured with 2cm<sup>3</sup>-coupler (EN 60318-5:2006) in reference setting.

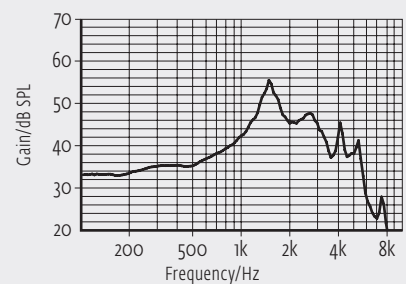
Maximum Output



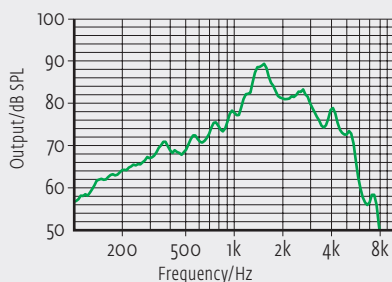
Acoustic Gain



Frequency Response (RTG)



Induction Coil Sensitivity



On account of the complex signal processing, the measurements of the represented curves are only possible in default setting of the device and under use of the current valid software version. Effects of the separate parameters see software.